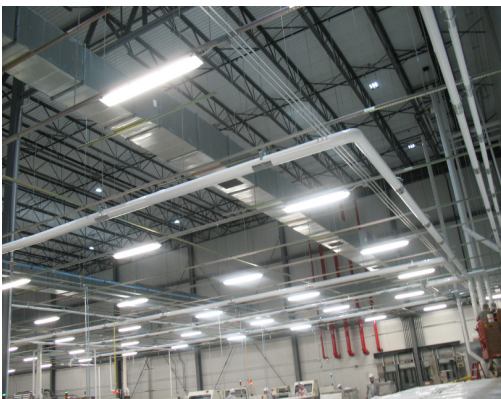


Agro-Farma New Refrigerated Warehouse

New Berlin, New York



Novus Engineering, P.C. provided multiple services for a new approximately 160,000 square foot refrigerated warehouse for Agro-Farma, Inc. including technical analysis for NYSERDA's New Construction Program, commissioning services, and documentation development for a tax deduction under the Energy Policy Act (EPACT) of 2005. Technical analysis services were completed in late 2010. Commissioning and verification for the EPACT documentation are currently underway.

While the new refrigerated warehouse includes a number of energy efficient features such as high efficiency roof top units and enhanced wall, roof, and floor insulation, the high efficiency lighting system is the only building component that qualifies for the EPACT tax deduction. Based on a reduction of more than 40% in lighting power density, the project is estimated to receive a substantial tax deduction.

In addition to the tax deduction, the project is eligible for an incentive of over \$190,500 through the New Construction Program. Construction is anticipated to be completed by the end of Summer 2011.

Completion Date: Summer 2011

Services Provided: 2010-2011

NCP Incentive Received: \$195,052

NOVUS
ENGINEERING, P.C.

25 Delaware Avenue
Delmar, NY 12054

P: 518.439.8235
F: 518.439.8592

www.novusengineering.com

SUSTAINABLE SOLUTIONS SINCE 1981